

## Rework instructions for wiring harness

**Citymaster**  
**CM400**



On the following pages you will find the work instructions for reworking the wiring harness for the power supply to the relay box at the rear of the vehicle.

Material required:

1 metre corrugated hose, slotted NW7.5 mm ET no. 01161450

0.5 metre corrugated hose, slotted NW10 mm ET no. 01271800

Cable ties and small items

## Rework instructions for wiring harness



Switch off the vehicle and engage the parking brake.

Then remove the ignition key and switch off the vehicle using the battery isolator switch. Remove the red plastic key to prevent the system from being switched on accidentally.

## Rework instructions for wiring harness



Open the side cover on the left in the direction of travel using the key provided and fix the cover in the open position by swinging out the fuel tank.

Then remove the wing nut for fastening the cover for the relay box and remove the cover.

## Rework instructions for wiring harness

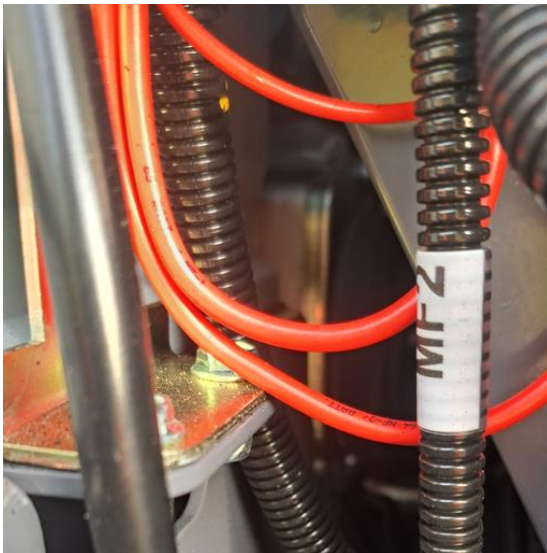
The current-carrying cables from the positive terminal of the battery must also be protected from the end of the existing corrugated conduit to the respective contact on the relay box with an appropriate corrugated conduit. Allow the corrugated conduits to overlap sufficiently and secure with cable ties.

Order number of the corrugated pipes:

1 metre of slotted corrugated pipe NW 7.5mm: 01161450

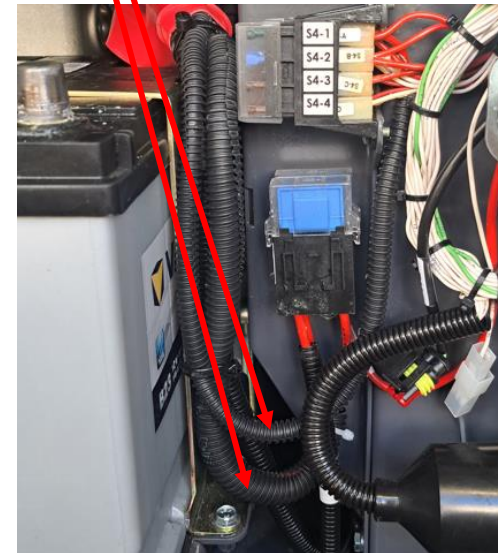
0.5 metre of slotted corrugated pipe NW 10mm: 01271800

Before



Make sure that the cables run smoothly along the battery holder and do not lie on top of each other!

After



## Rework instructions for wiring harness

After fitting the additional corrugated hoses, fit the cover of the relay box and lay the cables so that they do not touch the lower edge of the metal cover. Remove the cover and secure the cable harnesses to the battery holder with cable ties.



Once the cables have been fixed, the cover can be refitted, making sure that all tabs on the cover are engaged in the recesses provided. Refit the wing nut for fastening and check the wiring in this area again for correct position.

If the vehicle is equipped with a reversing buzzer, please also check this area carefully and, if necessary, change the position of the reversing buzzer by loosening the fastening screw.

## Rework instructions for wiring harness



Once the work has been completed and carefully checked, please close the cover correctly; the vehicle can now be put back into operation by switching it on via the battery isolator switch.